

**PHYSICAL SETTING
 EARTH SCIENCE**

Wednesday, January 24, 2007 — 9:15 a.m. to 12:15 p.m., only

ANSWER BOOKLET

Male

Student..... Sex: Female

Teacher


School..... Grade

Answer all questions in Part B-2 and Part C. Record your answers in this booklet.

<input type="text"/>		Performance Test Score (Maximum Score: 23)
.....		
Part	Maximum Score	Student's Score
A	35	
B-1	15	
B-2	15	
C	20	
Total Written Test Score (Maximum Raw Score: 85)		<input type="text"/>
Final Score (from conversion chart)		<input type="text"/>
Raters' Initials:		
Rater 1 Rater 2		

Part B-2

51

36 

52 Gradient = _____

53 _____

54 _____ cm

55 _____

56 _____

For Raters Only

51

52

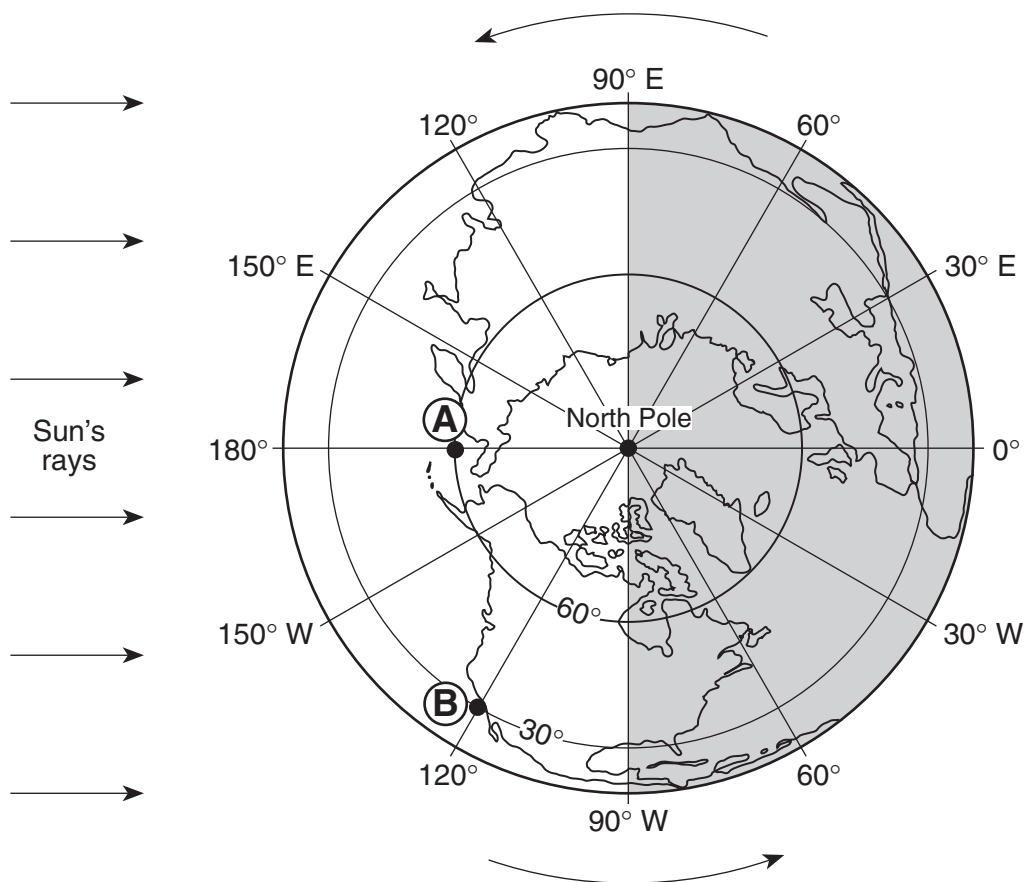
53

54

55

56

57



57

58 _____

58

59 _____

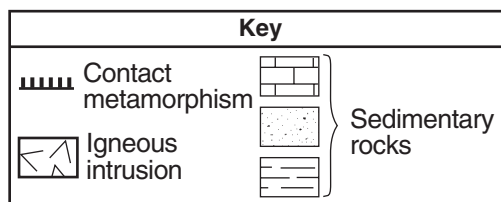
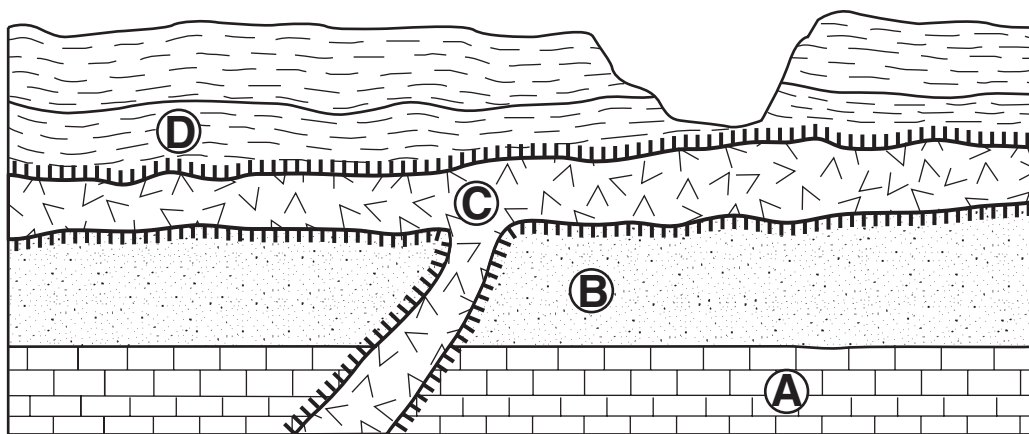
59

60 _____

60

For Raters
Only

61



61

62

62

63

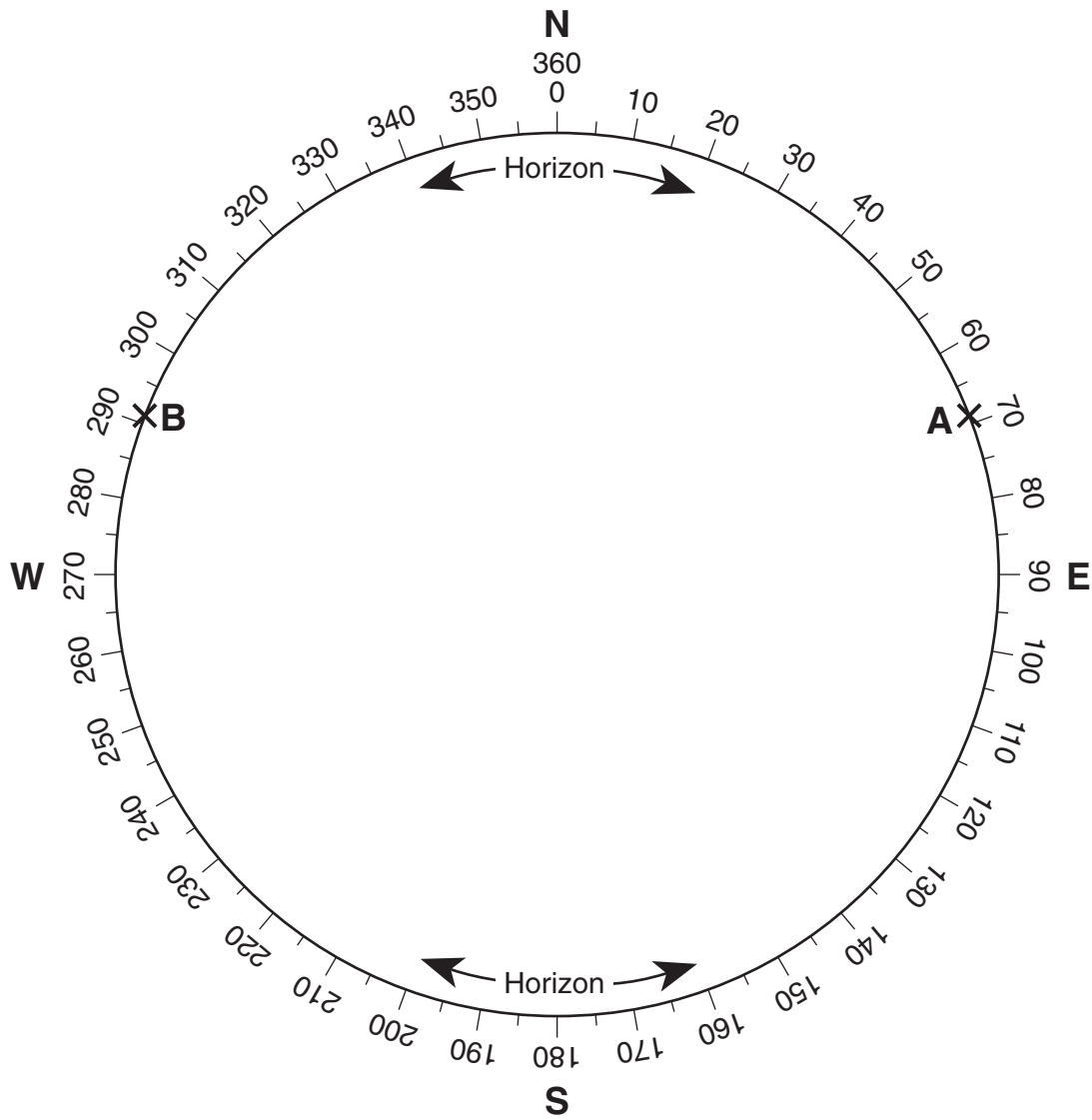
63

Total Score for
Part B-2

Part C

64

Azimuth Circle



64

65

65

**For Raters
Only**

66 _____

66

67 _____ **K**

67

68 _____

68

69 _____ **AU**

69

70 _____

70

71 _____ **°F**

71

72 _____ **%**

72

73 _____ **°C**

73

74 _____ **Plate**

74

75 _____

75

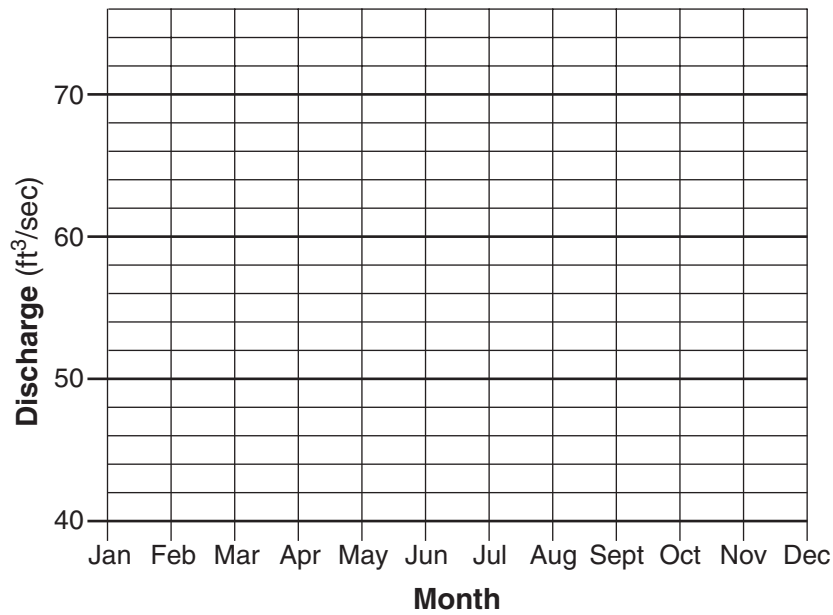
76 _____

76

For Raters
Only

77

Average Monthly Stream Discharge



77

78

78

79

79

80

80

81

81

82

82

Total Score for
Part C

