

# PHYSICAL SETTING EARTH SCIENCE

Tuesday, June 19, 2007 — 9:15 a.m. to 12:15 p.m., only

## ANSWER BOOKLET

Male

Student..... Sex:  Female

Teacher .....

School..... Grade .....

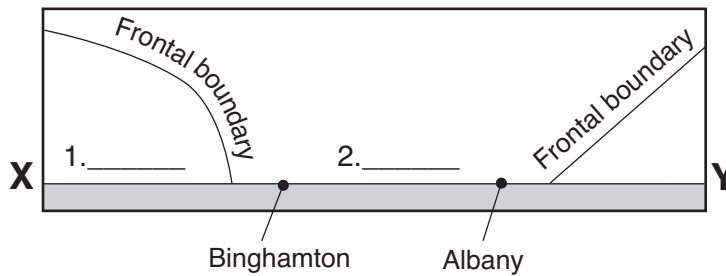
Answer all questions in Part B-2 and Part C. Record your answers in this booklet.

<input type="text"/>		<b>Performance Test Score</b> (Maximum Score: 23)
.....		
<b>Part</b>	<b>Maximum Score</b>	<b>Student's Score</b>
<b>A</b>	<b>35</b>	
<b>B-1</b>	<b>15</b>	
<b>B-2</b>	<b>14</b>	
<b>C</b>	<b>21</b>	
<b>Total Written Test Score</b> (Maximum Raw Score: 85)		<input type="text"/>
<b>Final Score</b> (from conversion chart)		<input type="text"/>
<b>Raters' Initials:</b>		
Rater 1 ..... Rater 2 .....		

### Part B-2

For Raters Only

51



51

52 \_\_\_\_\_

52

53 \_\_\_\_\_

53

54 \_\_\_\_\_ Period

54

55 (1) \_\_\_\_\_

55

(2) \_\_\_\_\_

56 \_\_\_\_\_

56

**For Raters  
Only**

57 \_\_\_\_\_

57

58 \_\_\_\_\_

58

59 \_\_\_\_\_

59

60 \_\_\_\_\_

60

61 \_\_\_\_\_

61

62 \_\_\_\_\_

62

63 \_\_\_\_\_ and \_\_\_\_\_

63

64 Mineral: \_\_\_\_\_

64

Use: \_\_\_\_\_

**Total Score for  
Part B-2**

Part C

65 July \_\_\_\_\_

65

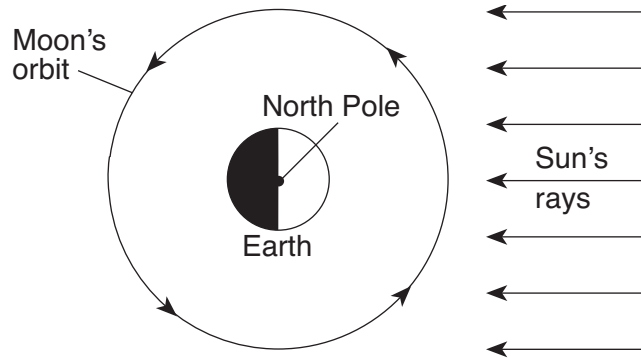
66 \_\_\_\_\_

66

67 August \_\_\_\_\_

67

68



68

69 \_\_\_\_\_

69

\_\_\_\_\_

For Raters  
Only

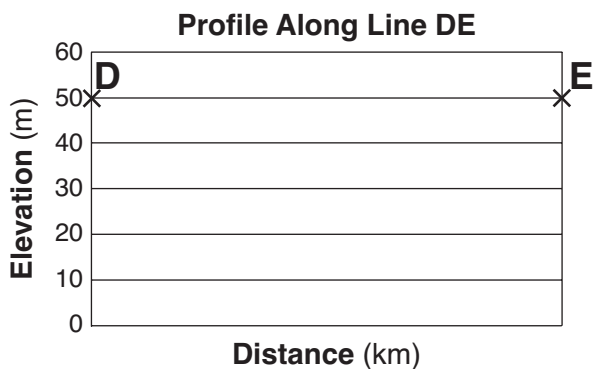
70 \_\_\_\_\_ m

70

71 Gradient = \_\_\_\_\_

71

72



72

73 \_\_\_\_\_  
\_\_\_\_\_

73

74 Magnitude: \_\_\_\_\_

74

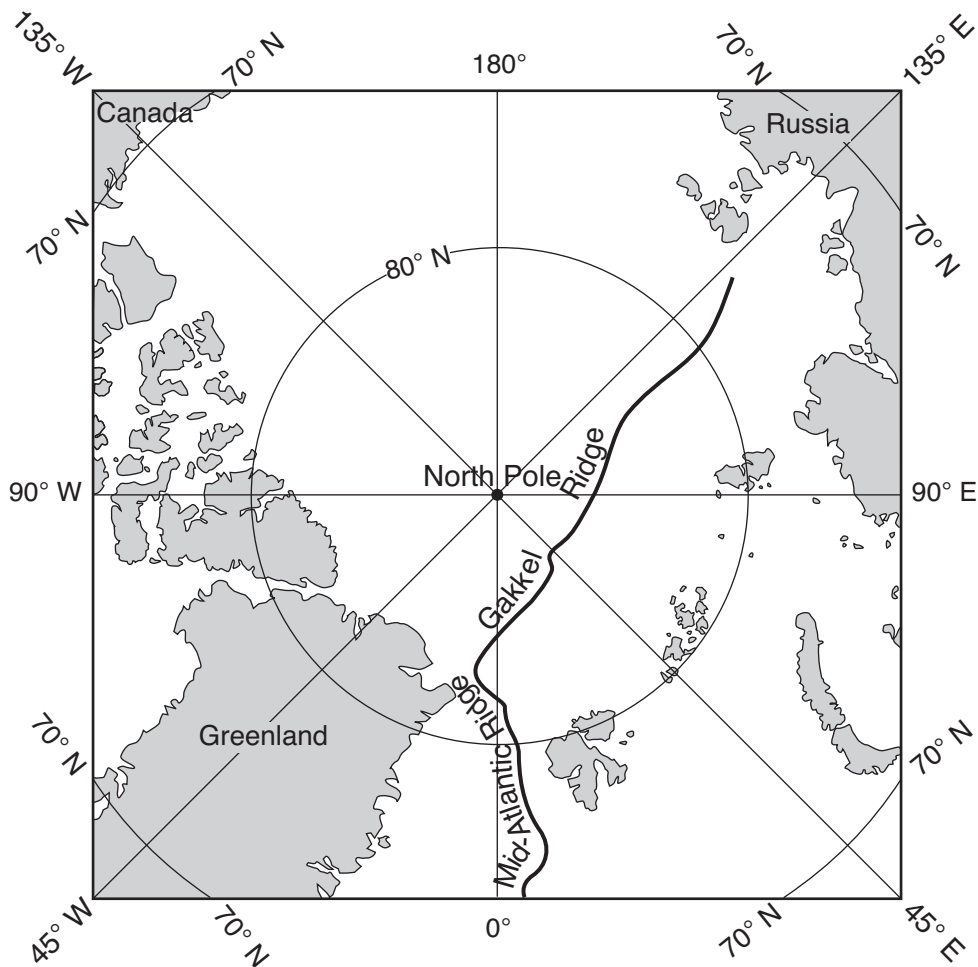
75 \_\_\_\_\_  
\_\_\_\_\_

75

76 \_\_\_\_\_ minutes \_\_\_\_\_ seconds

76

77



77

78 \_\_\_\_\_

78

79 \_\_\_\_\_ Plate and \_\_\_\_\_ Plate

79

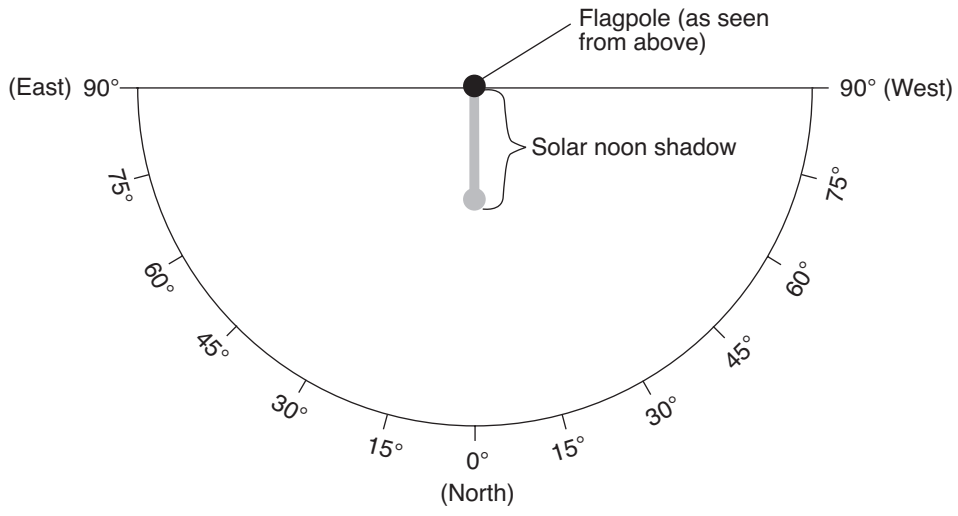
80 \_\_\_\_\_

80

81 \_\_\_\_\_ and \_\_\_\_\_

81

82



For Raters Only

82

Total Score for Part C



