

PHYSICAL SETTING EARTH SCIENCE

Thursday, August 14, 2014 — 12:30 to 3:30 p.m., only

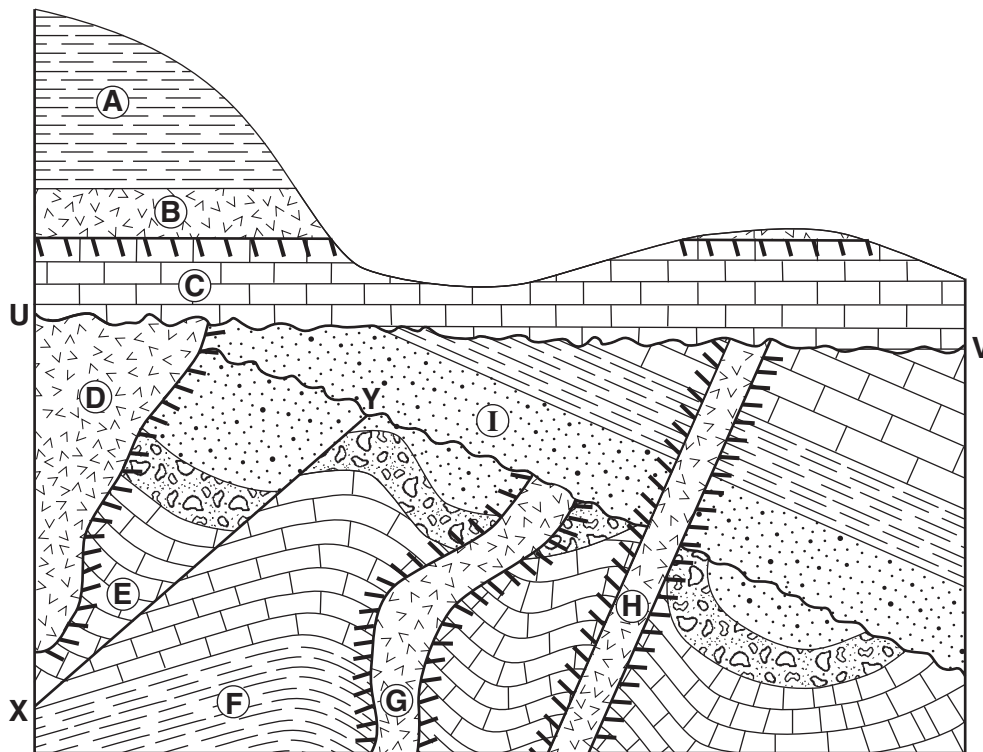
ANSWER BOOKLET

Student Sex: Male
 Female
Teacher
School Grade

Record your answers for Part B-2 and Part C in this booklet.

Part B-2

51



Key	
	Igneous rock
	Contact metamorphism

52 _____

53 _____

54 _____ million years ago

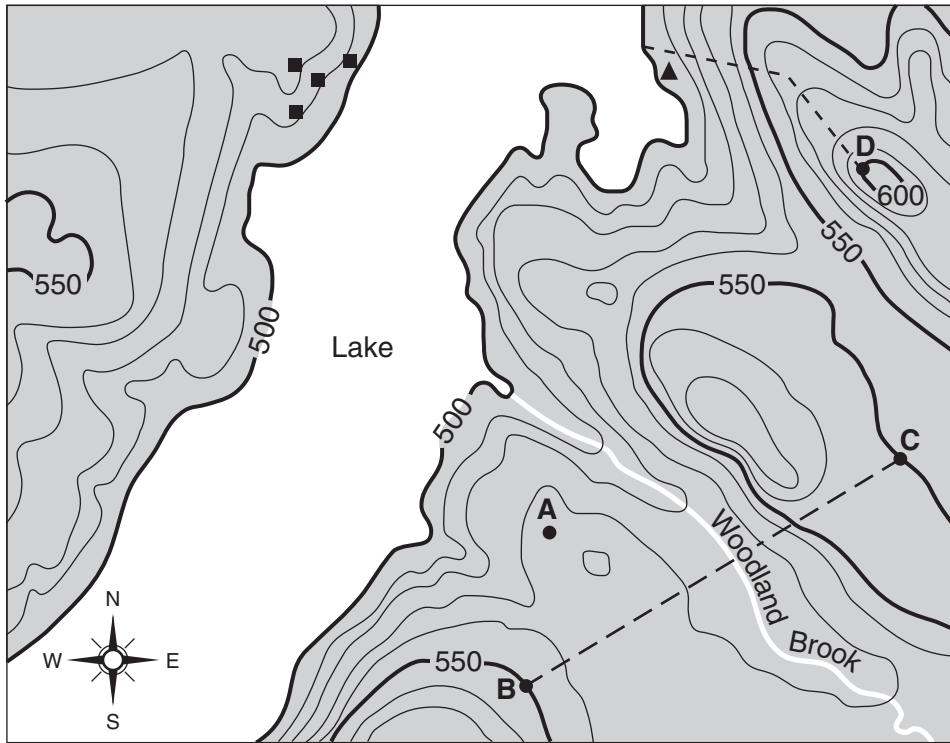
55 _____

56 _____

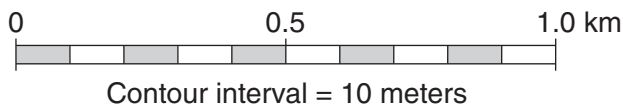
57 _____

58 _____

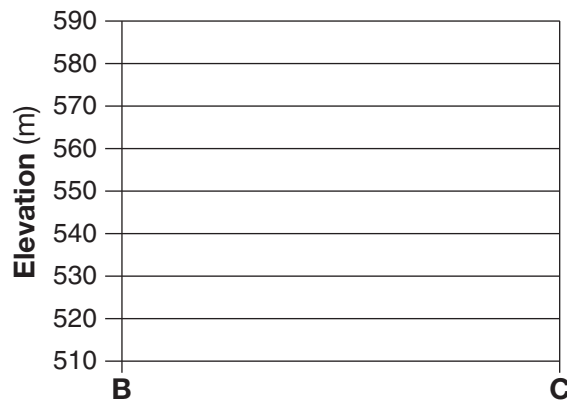
59



Key	
▲	Campsite
- - -	Trail
■	Building



60

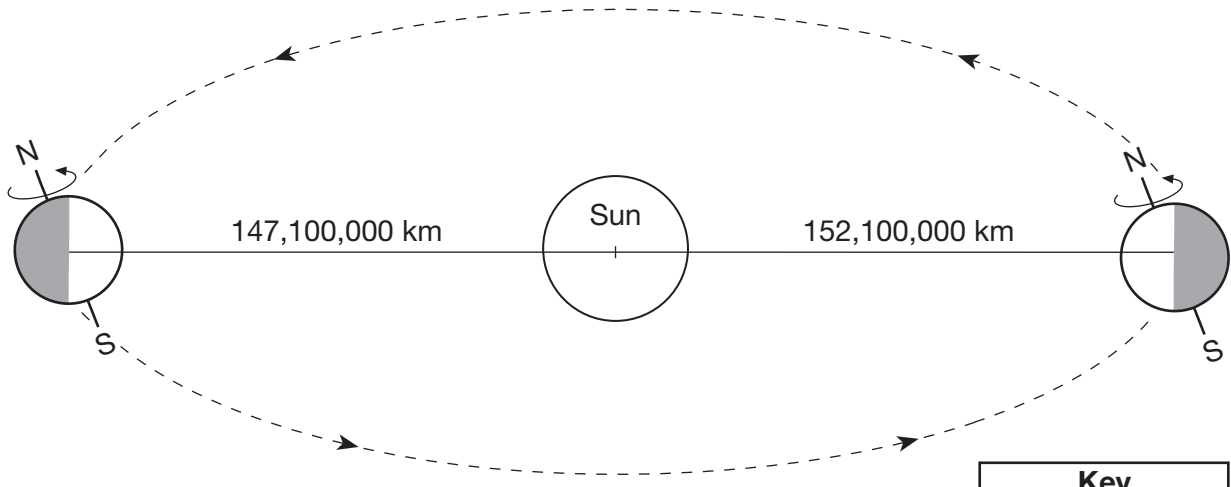


61 **Circle one:** into the lake out of the lake

Contour-line evidence: _____

62 _____ m/km

63

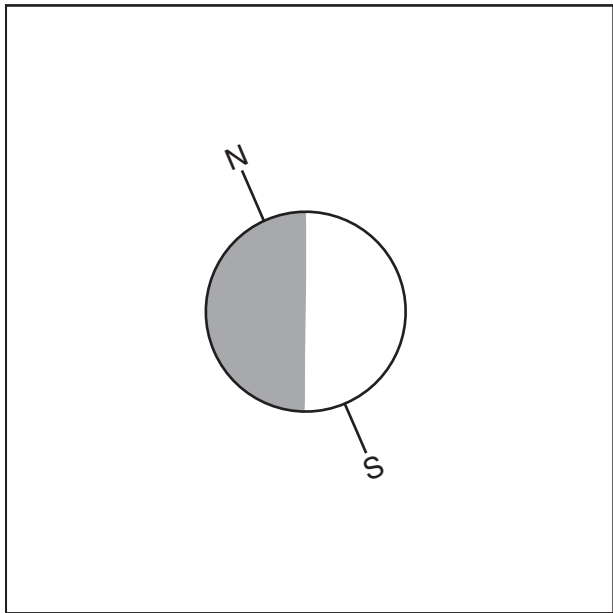


(Not drawn to scale)

Key	
Earth motions:	
-->	Revolution
↻	Rotation

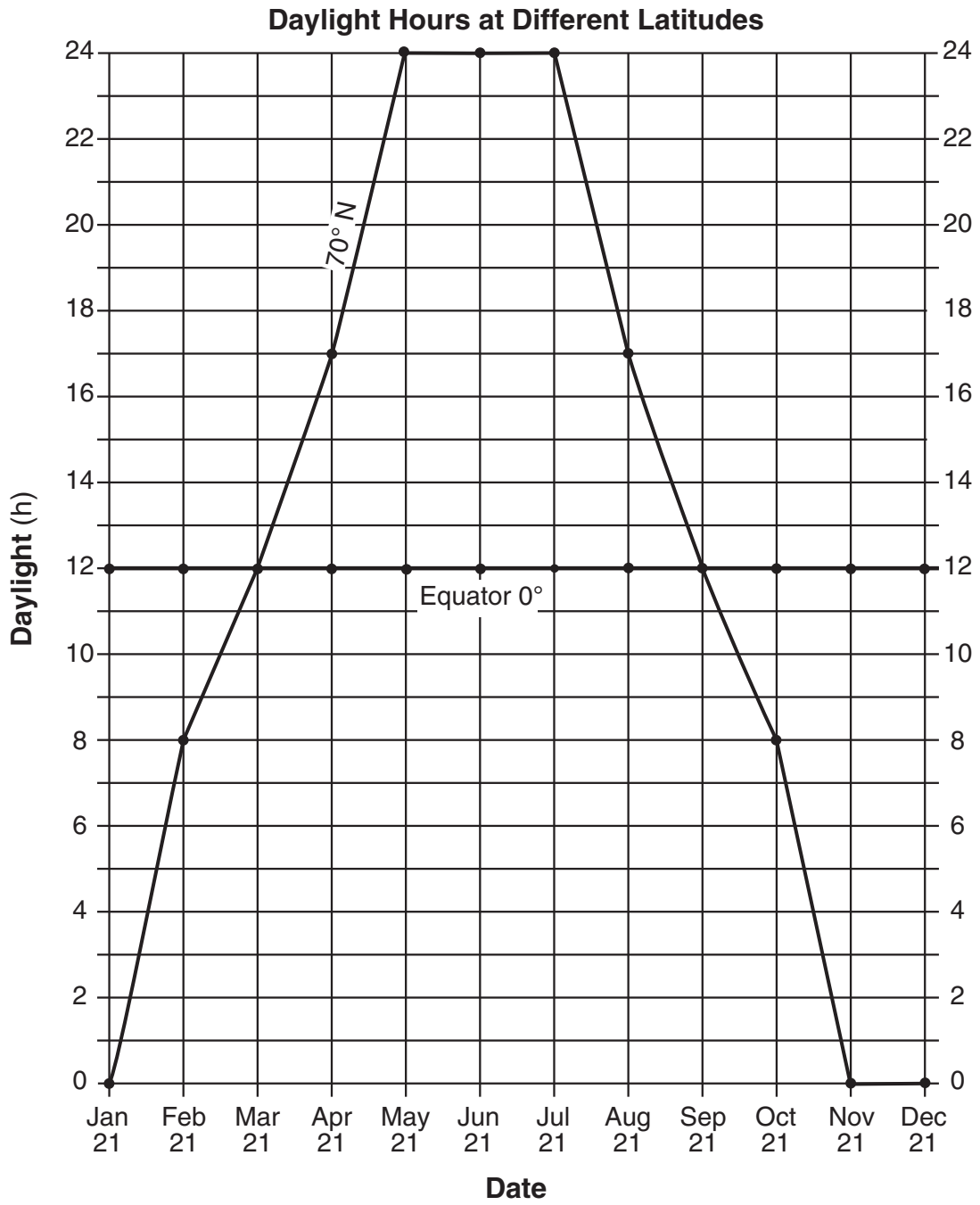
64 _____ °

65



Part C

66



67 _____

68 _____ h

69 Color: _____

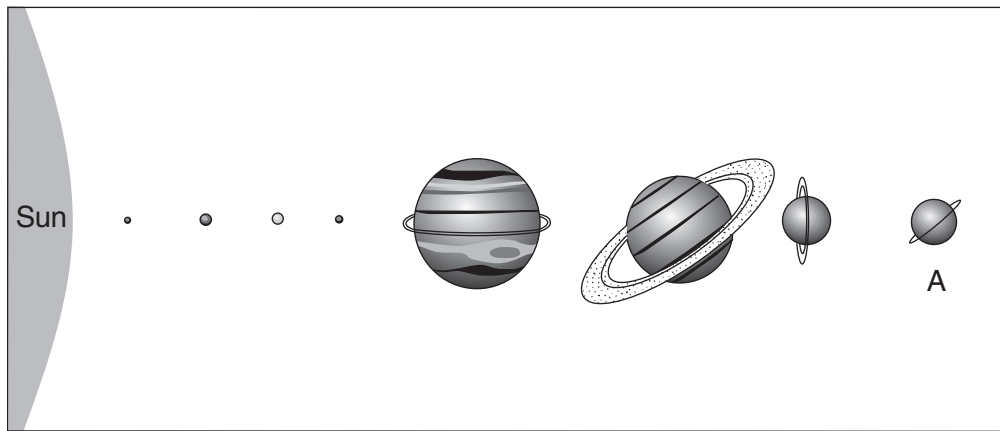
Texture: _____

70 _____ C°/h

71 (1) _____

(2) _____

72



(Not drawn to scale)

73 _____

74 _____ million years ago

75 _____ times larger

76 _____

		Minerals		Igneous Rocks
		Name	Symbol	
Mineral Group A		Quartz		Granite
		Potassium feldspar		
		Plagioclase feldspar		
Mineral Group B		Amphibole		Diorite
		Pyroxene		
		Biotite mica		Gabbro
		Olivine		

78 Group A: _____

79 _____

80 _____

81 _____

82 Action 1: _____

Action 2: _____

83 _____ **Fault**

Type of plate boundary: _____

84 Perceived shaking: _____

Observed damage: _____

85 _____
