



Haitian Creole Edition
Grade 5 Mathematics, Book 1
March 6–10, 2006

Pwogram Egzamen Leta Nouyòk
Matematik
Liv 1

Ane **5**

6–10 Mas 2006



Developed and published by CTB/McGraw-Hill LLC, a subsidiary of The McGraw-Hill Companies, Inc., 20 Ryan Ranch Road, Monterey, California 93940-5703. Copyright © 2006 by New York State Education Department. All rights reserved. No part of this publication may be reproduced or distributed in any form or by any means, or stored in a database or retrieval system, without the prior written permission of New York State Education Department.

TRIK POU FÈ EGZAMEN AN

Men kèk sijesyon pou ede ou fè tout sa ou kapab:

- Asire ou li avèk atansyon tout direksyon ki nan tiliv egzamen an.
- Ou ka sèvi avèk zouti pou ede ou rezoud nenpòt pwoblèm ki nan egzamen an.
- Li chak kesyon avèk atansyon epi reflechi sou chak repons anvan ou chwazi repons ou.



Pòtre sa a vle di ou pral sèvi avèk règ ou.



Pòtre sa a vle di ou pral sèvi avèk rapòtè ou.

Egzanp A

Samuel chwazi 150 frèz nan espas ki genyen frèz la. Li distribiye tout frèz yo bay 5 zanmi. Si Samuel te bay chak zanmi menm kantite frèz, konbyen frèz chak zanmi te resewva?

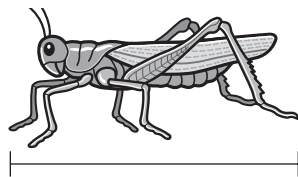
- A 30
- B 50
- C 145
- D 155

Egzanp B



Sèvi ak règ ou pou ede ou rezoud pwoblèm sa a.

Kati kenbe yon sotrèl tankou sa yo montre anba a.



Ki longè sotrèl la an pous?

- F 1
- G $1\frac{1}{2}$
- H 2
- J $2\frac{1}{2}$

1

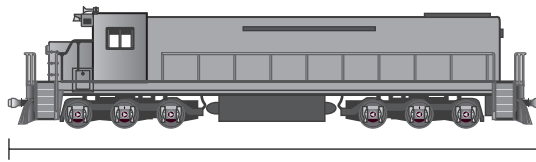
An 2003, popilasyon Kings County te 2.472.523. Ki valè 4 nan nonb sa a?

- A 400
- B 40.000
- C 400.000
- D 4.000.000

2

Sèvi ak règ ou pou ede ou rezoud pwoblèm sa a.

Brandon achte yon tren jwèt tankou sa yo montre anba a.



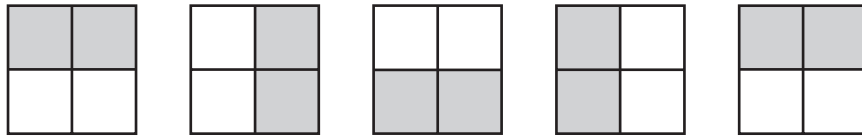
Ki longè tren jwèt la?

- F $2\frac{1}{4}$ pous
- G $2\frac{1}{2}$ pous
- H $2\frac{3}{4}$ pous
- J 3 pous

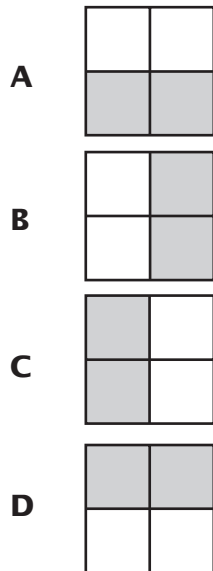
Kontinye

3

Ki Raymond trase modèl ki anba.



Ki figi Raymond ta dwe trase answit pou kontinye modèl la?

**4**

Ki modèl ki swiv règ ki anba a?

Divize pa 2.

F 8, 6, 4, 2, . . .

G 9, 7, 5, 3, . . .

H 24, 12, 6, 3, . . .

J 36, 18, 9, 3, . . .

5

Ki kantite total aks simetri ki ka trase sou rektang sa a?



A 1

B 2

C 3

D 4

6

Genyen 40 elèv nan yon otobis. Pami elèv sa yo, 24 se fi. Ki fraksyon elèv ki se fi? Senplifye fraksyon an sou fòm ki pi senp lan.

F $\frac{2}{3}$

G $\frac{3}{5}$

H $\frac{4}{5}$

J $\frac{7}{10}$

Kontinye

7

Abigail, Ryan ak Dale li menm liv la. Abigail li $\frac{1}{4}$ liv la. Ryan li $\frac{1}{10}$ liv la. Dale li $\frac{1}{5}$ liv la. Ki lòd fraksyon yo depi nan **pi gran an** jouk nan **pi piti a**?

A $\frac{1}{4}$ $\frac{1}{5}$ $\frac{1}{10}$

B $\frac{1}{10}$ $\frac{1}{5}$ $\frac{1}{4}$

C $\frac{1}{5}$ $\frac{1}{10}$ $\frac{1}{4}$

D $\frac{1}{4}$ $\frac{1}{10}$ $\frac{1}{5}$

8

Tony genyen yon riban ki mezire 0,75 mètr nan longè. Li koupe 0,125 mètr nan riban an epi li ba bon zanmi li. Ki kantite riban ki rete?

F 0,2 mètr

G 0,5 mètr

H 0,625 mètr

J 0,635 mètr

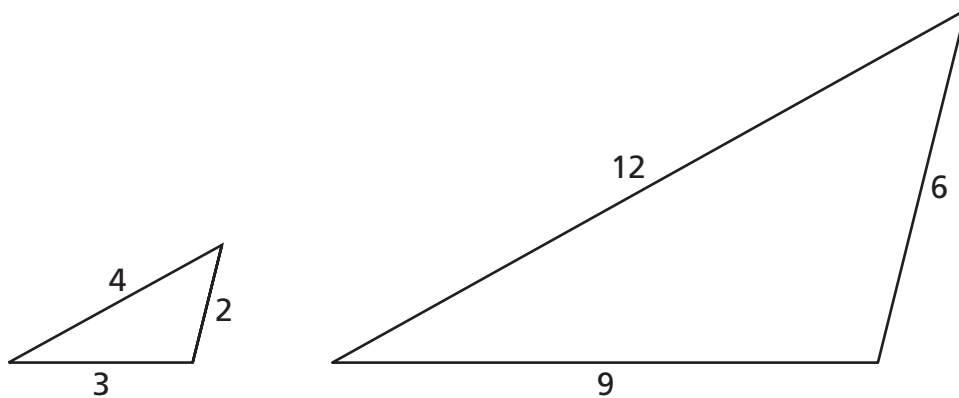
9

Klas senkyèm ane yo ap òganize yon ranmasaj manje. Genyen 84 elèv nan senkyèm ane a. Objektif chak elèv se ranmase 16 bwat manje. Konbyen bwat y ap ranmase antou si chak elèv nan senkyèm ane a reyalize objektif la?

- A 48
- B 100
- C 1.344
- D 1.464

10

Triyang ki anba yo sanble.



Ki fraksyon ki reprezante rapò ant longè kote ti triyang lan ak longè kote gwo triyang lan?

- F $\frac{1}{3}$
- G $\frac{4}{9}$
- H $\frac{1}{2}$
- J $\frac{2}{3}$

Kontinye

11

Yon chan mayi genyen 46 ranje mayi. Genyen 32 pye mayi nan chak ranje. Ki kantite total pye mayi ki genyen nan chan mayi a?

- A 1.362
- B 1.372
- C 1.462
- D 1.472

12

Ron travay ant 8:45 A.M. ak 3:05 P.M. Konbyen tan Ron fè ap travay?

- F 5 èdtan 40 minit
- G 6 èdtan 20 minit
- H 6 èdtan 40 minit
- J 7 èdtan 20 minit

13

Chyen Kenisha a manje $\frac{15}{20}$ yon sache manje chyen semenn pase. Kijan $\frac{15}{20}$ eksprime an fòm ki pi senp lan?

- A $\frac{3}{5}$
- B $\frac{7}{10}$
- C $\frac{2}{3}$
- D $\frac{3}{4}$

14 Kwan te genyen $16\frac{3}{4}$ pous fil. Li koupe $4\frac{2}{4}$ pous fil pou li itilize nan yon pwojè atizana. Ki kantite fil Kwan rete?

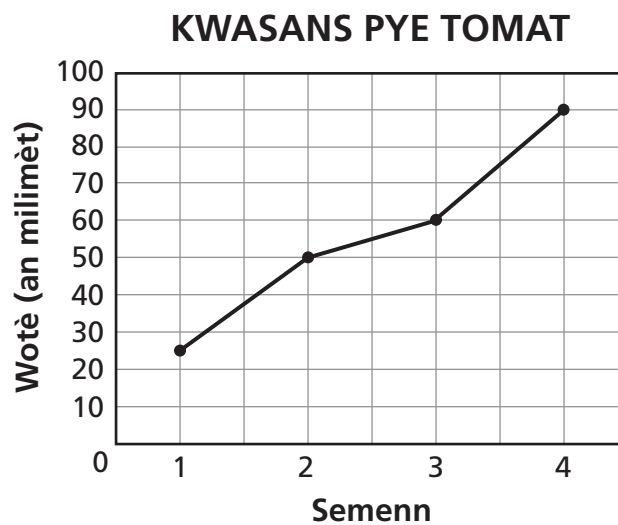
F $12\frac{1}{4}$ pous

G $12\frac{2}{4}$ pous

H $12\frac{3}{4}$ pous

J $13\frac{1}{4}$ pous

15 Graf lineyè ki anba a montre kouman yon pye tomat grandi.



Konbyen mm pye tomat la te grandi ant premye Semenn nan ak 4^{yèm} Semenn nan?

A 65 mm

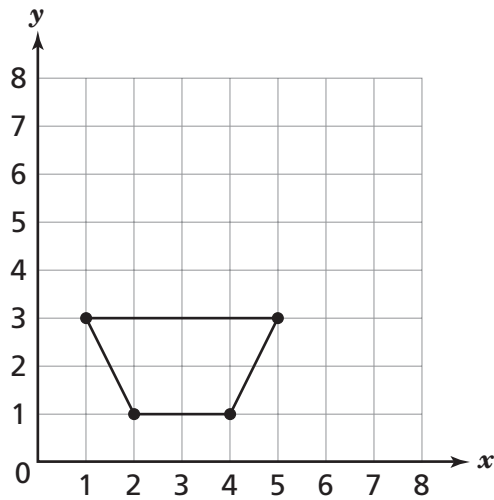
B 70 mm

C 75 mm

D 90 mm

Kontinye

16 Anna mete 4 pwen sou kadriyaj ki anba a.



Li konekte yo pou fòme yon figi jeyometrik. Ki figi jeyometrik ki fòme?

- F** rektang
- G** lozanj
- H** kare
- J** trapèz

17 Sumiko ap mete yon platbann flè anlè chak miray chanm li. Chanm nan mezire 14 pye nan longè ak 10 pye nan lajè. Ki longè total platbann lan?

$$\text{perimèt rektang} = (2 \times \text{pou longè}) + (2 \times \text{pou lajè})$$

- A** 24 pye
- B** 28 pye
- C** 38 pye
- D** 48 pye

18

Jen ak Eric netwaye planche kwizin nan ansanm. Jen netwaye $\frac{2}{7}$ planche a, epi Eric netwaye $\frac{3}{7}$ planche a. Ki kantite nan planche a yo netwaye antou?

F $\frac{6}{49}$

G $\frac{5}{14}$

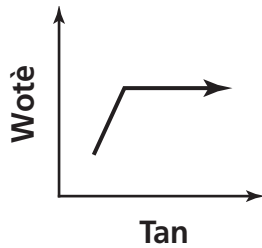
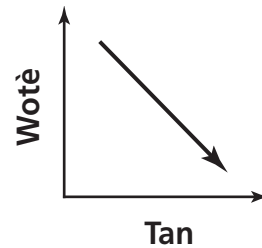
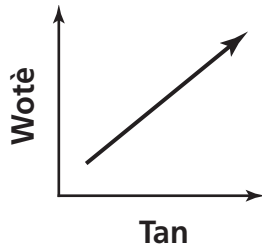
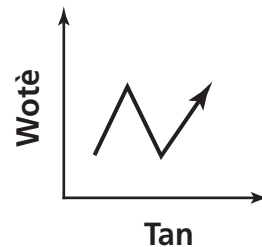
H $\frac{5}{7}$

J $\frac{6}{7}$

19

Yon chyen ap gwosi chak mwa pandan premye ane lavi li. Answit gwosè chyen an rete menm pandan lontan.

Ki graf lineyè ki **pi byen** reprezante gwosè chyen an nan yon peryòd tan?

**A****C****B****D*****Kontinye***

20

Koulèv Laurel la mezire $2\frac{1}{2}$ pye nan longè. Si longè koulèv la vin gen 1 pye anplis, ki longè l ap genyen an pous?

- F 30 pous
- G 32 pous
- H 40 pous
- J 42 pous

21

Rapò ant fi ak gason nan klas Msye Hansen se 4:5. Rapò ant fi ak gason nan klas Madam Luna se 8:10. Ki ekwasyon ki konpare rapò sa yo kòrèkteman?

- A $\frac{4}{5} = \frac{10}{8}$
- B $\frac{4}{5} = \frac{8}{10}$
- C $\frac{4}{10} = \frac{8}{5}$
- D $\frac{4}{10} = \frac{5}{8}$

22

Ki mwayèn aritmetik ansanm nonb ki anba a?

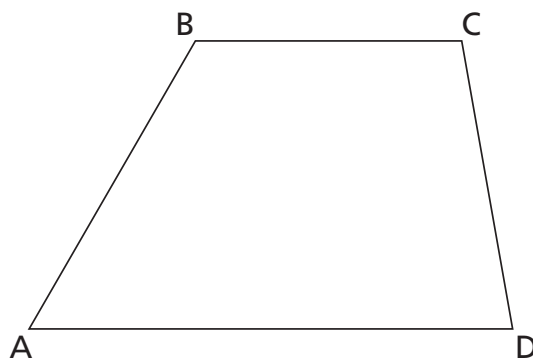
15, 39, 30, 10, 8, 39, 27

- F 39
- G 31
- H 27
- J 24

23

Sèvi ak rapòtè ou pou ede ou rezoud pwoblèm sa a.

Ki ang nan figi anba a ki mezire 60° ?



A $\angle A$

B $\angle B$

C $\angle C$

D $\angle D$

24

Ki fraz ki vre?

F $\frac{1}{2} < \frac{1}{4}$

G $\frac{1}{4} > \frac{1}{5}$

H $\frac{2}{10} = \frac{2}{5}$

J $\frac{1}{2} \neq \frac{5}{10}$

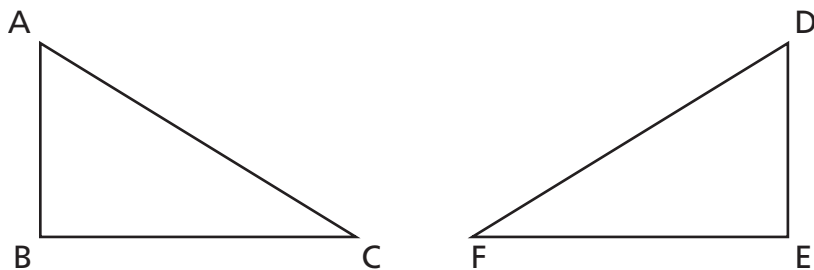
Kontinye

25 Ki règ ki eksplike modèl ki anba a?

14, 42, 126, 378, . . .

- A Miltipliye pa 2.
- B Miltipliye pa 3.
- C Adisyone 18.
- D Adisyone 28.

26 Triyang ki anba yo izometrik.



Ki kote nan triyang yo ki korespondan?

- F \overline{AB} ak \overline{DE}
- G $\angle A$ ak $\angle E$
- H \overline{BC} ak \overline{DF}
- J $\angle B$ ak $\angle F$



Ane 5
Matematik
Liv 1

Grade 5
Mathematics
Book 1