

# GRADE 5

## ELEMENTARY-LEVEL SOCIAL STUDIES TEST

### BOOKLET 2

### DOCUMENT-BASED QUESTION (DBQ)

NOVEMBER 18, 2004

Student Name \_\_\_\_\_

School Name \_\_\_\_\_

Print your name and the name of your school on the lines above.

The test has three parts. Today you will take Part III of the test.

**Part III** is based on several documents.

**Part III A** contains the documents. Each document is followed by one or more questions. Write your answer to each question in this test booklet in the space provided. You will use your answers to the questions to help you write the essay.

**Part III B** contains one essay question based on the documents. Write your answer to this question in the separate essay answer booklet, beginning on the first page of the booklet.

You will have  $1\frac{1}{2}$  hours to answer the questions in Booklet 2 and write your essay.

**DO NOT TURN THIS PAGE UNTIL YOU ARE TOLD TO DO SO.**

## Part III

### DOCUMENT-BASED QUESTION

*Directions:* The task below is based on documents 1 through 6. This task is designed to test your ability to work with historical documents. Look at each document and answer the question or questions after each document. Use your answers to the questions to help you write your essay.

#### **Historical Background:**

Prior to 1860, the Erie Canal and other smaller canals were the primary method of transporting goods and people throughout New York State. By 1860, the railroad was rapidly replacing canals as the most popular method of transportation in New York State and across the United States.

#### **Task:**

For Part A, read *each* document carefully and answer the question or questions after each document. Then read the directions for Part B and write your essay.

For Part B, use your answers from Part A, the information from the documents, and your knowledge of social studies to write a well-organized essay in your own words. In your essay you should

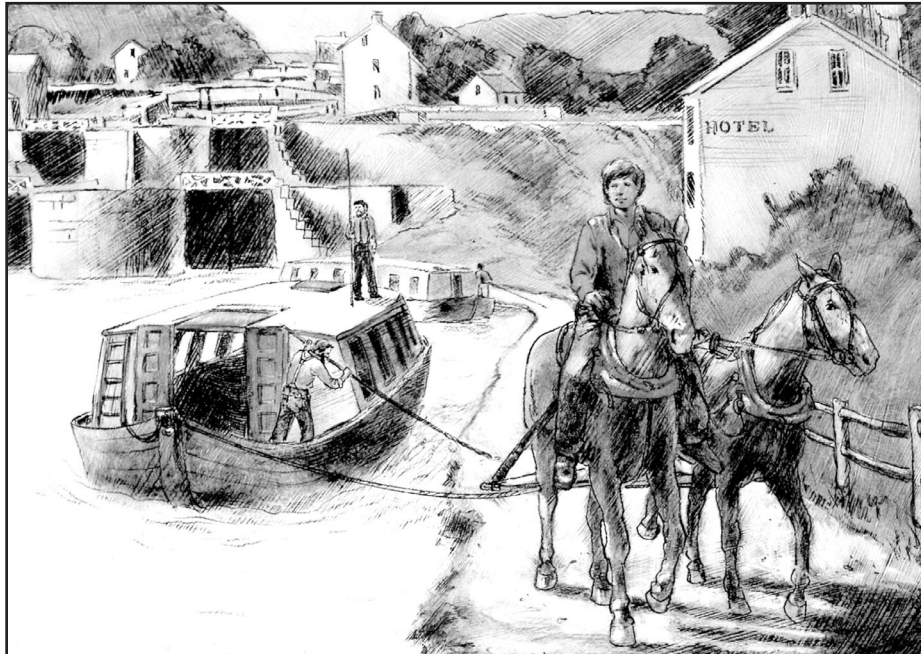
- Write about the different reasons that railroads replaced canals as the most popular method of transportation

## Part A

### Short-Answer Questions

*Directions:* Read each document and answer the question or questions that follow each document in the space provided.

#### Document 1



Source: R. Conrad Stein, *The Story of the Erie Canal*, Childrens Press (adapted)

In 1825, the Erie Canal was completed. New York now had a transportation route from the Great Lakes to the Hudson River which led to New York City. The cost of shipping wheat from western New York to New York City dropped from \$100 a ton to \$5 a ton. It took only nine days to get to New York City by canal, but it took twenty days by horse and wagon.

- 1 According to this document, what were the *two* major advantages that the Erie Canal brought to farmers and businesses in western New York State?

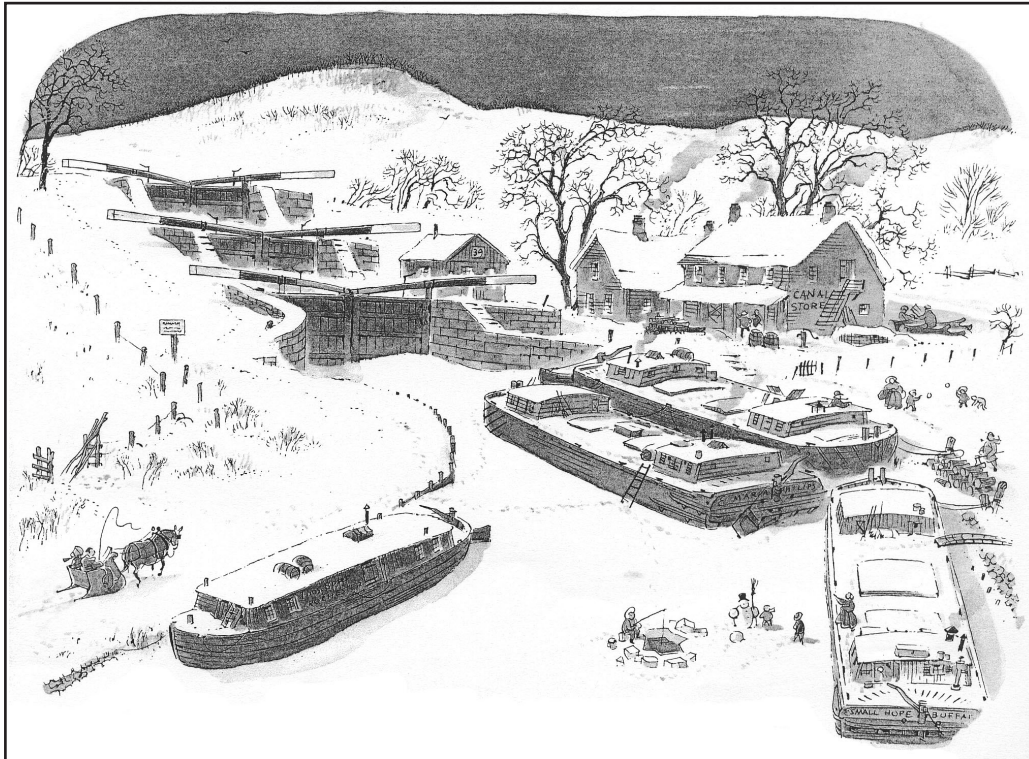
[0.5, 0.5]

(1) \_\_\_\_\_ Score

(2) \_\_\_\_\_ Score

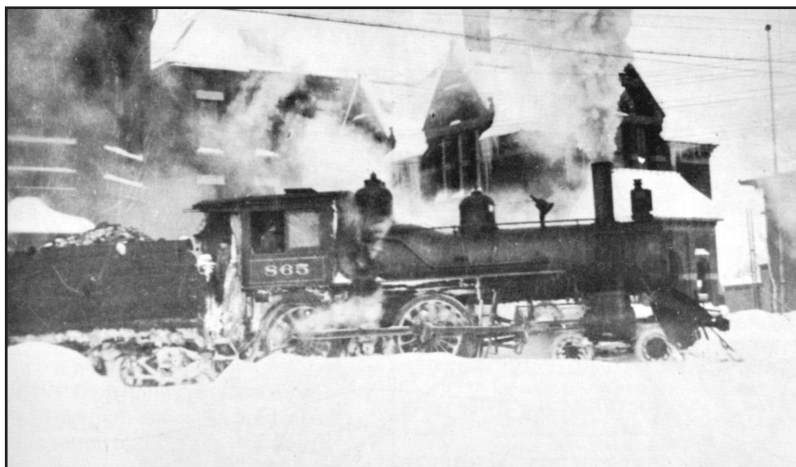
## Document 2

### Canal in Winter



Source: Peter Spier, *The Erie Canal*, Doubleday and Co.

### Train Pulling Out of Station in Winter



Source: Photograph provided by Lawrence Doherty, Jim Shaughnessy, *The Rutland Road*, Syracuse University Press (adapted)

**2** Based on these two pictures, what advantage did trains have over canal boats in the winter? [0.5]

Score



### Document 3



Source: F. Daniel Larkin et al., *New York Yesterday and Today*, Silver Burdett & Ginn

Railroads were cheaper to build than canals. They could cross mountains, and they were fast. A journalist noted the time saved on a train trip from Ballston, New York, to Troy, New York, in the 1830s. This train trip took two hours to travel 26 miles. If the journalist had taken a boat trip along the Erie Canal, it would have taken six hours to go 26 miles.

**3a** State the time it took to travel 26 miles by railroad and by boat. [0.5, 0.5]

Railroad \_\_\_\_\_ Score

Boat \_\_\_\_\_ Score

**b** According to this document, *other than* being faster, what were *two* advantages railroads had over canals? [0.5, 0.5]

(1) \_\_\_\_\_ Score

(2) \_\_\_\_\_ Score

## Document 4

### Major Railroads in the 1850s



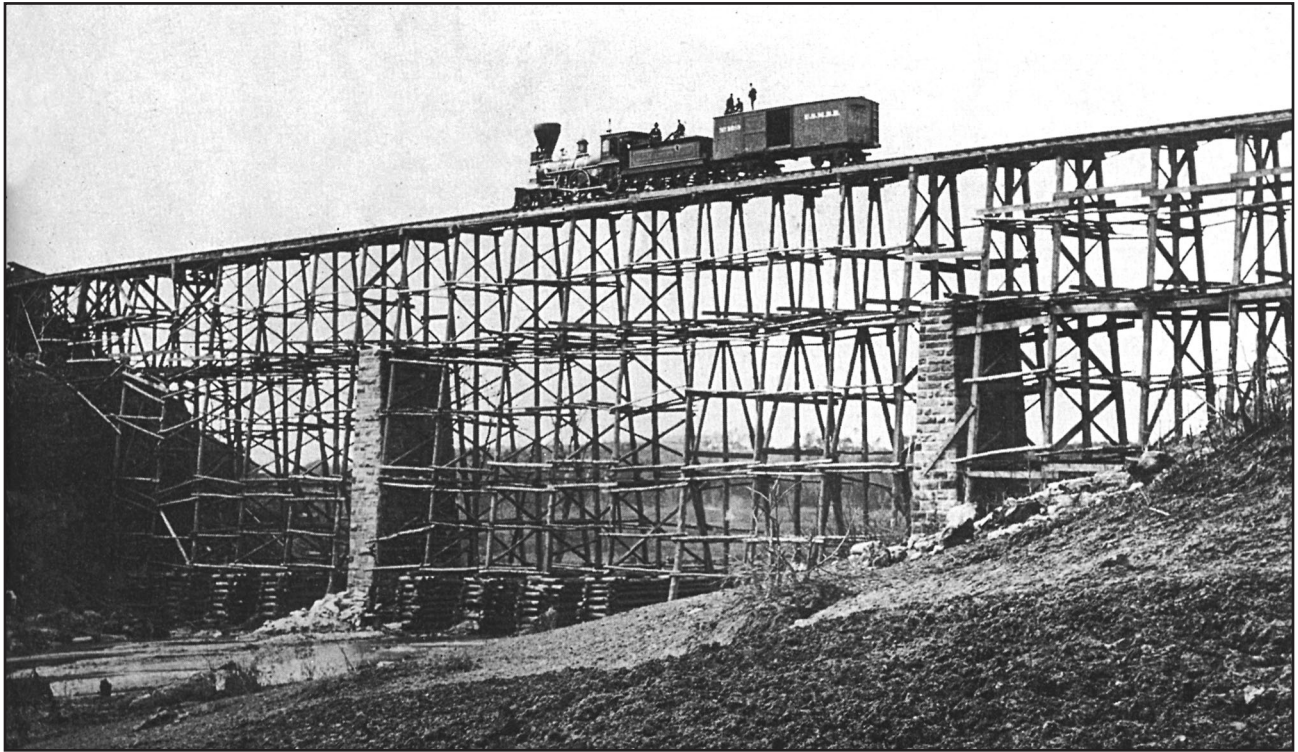
Source: Drewry, Green et al., *United States History Beginnings Through the Reconstruction*, Charles Merrill Publishing (adapted)

During the 1850s, a series of major railroads and branch lines crisscrossed the nation. New York City and Chicago became major rail centers, and all the principal [important] northern cities were joined together by rail.

- 4 According to this document, what effect did the railroads and branch lines have on the United States? [0.5]

Score

## Document 5



Source: Carter Smith, ed., *Bridging the Continent*, Millbrook Press

Early drawbacks delayed the acceptance of railroads. The first rails, made of wood covered with a strip of iron, broke frequently under heavy carloads. Soft roadbeds and weak bridges added to the hazards. Still, promoters believed in the future of train travel.

Engineers learned to build sturdier bridges and solid roadbeds. They replaced the wooden rail with a T-shaped cast-iron rail. Such improvements made railroad travel safer, faster, and more efficient. Soon, Americans looked hopefully to the railroads as they once had to the canal to ship goods and people.

**5** Name *three* improvements the railroad industry had to make to replace canals as the most popular method of transporting goods and people.

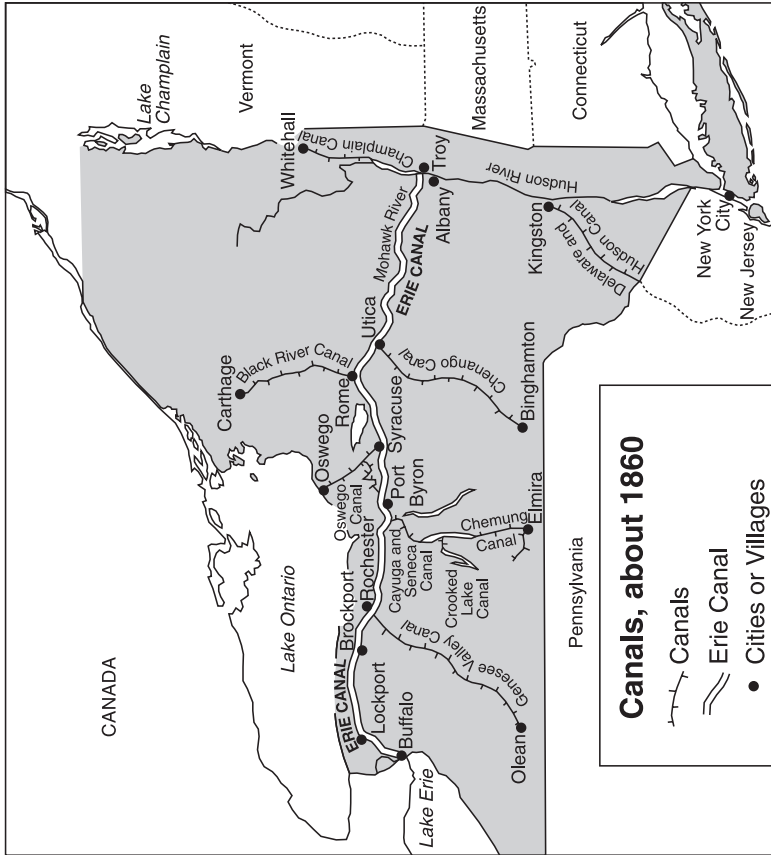
[0.5, 0.5, 0.5]

(1) \_\_\_\_\_ Score

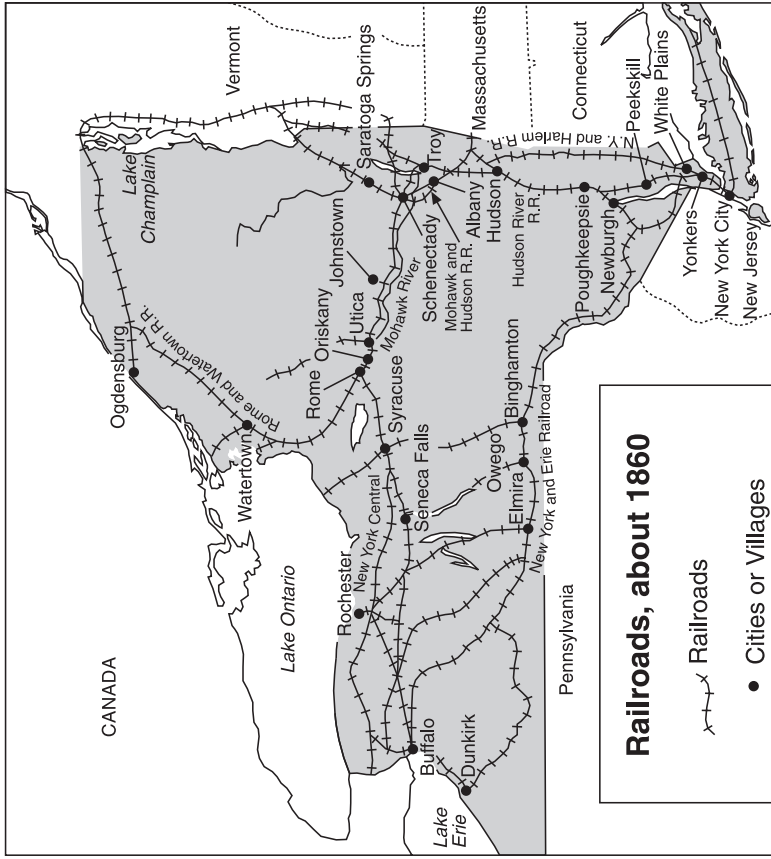
(2) \_\_\_\_\_ Score

(3) \_\_\_\_\_ Score

Canals in N.Y. State



Railroads in N.Y. State



Source: F. Daniel Larkin et al., *New York Yesterday and Today*, Silver Burdett and Ginn

6 Based on these maps, what advantage did railroads have over canals in New York State? [0.5]

\_\_\_\_\_

\_\_\_\_\_

Score

**FOR TEACHER USE ONLY**  
**Total Part III A Score** \_\_\_\_\_  
**Maximum Total is 6 Points**



## Part B

### Essay

*Directions:* In your own words, write a well-organized essay using the documents, the answers to the questions in Part A, and your knowledge of social studies.

#### **Historical Background:**

Prior to 1860, the Erie Canal and other smaller canals were the primary method of transporting goods and people throughout New York State. By 1860, the railroad was rapidly replacing canals as the most popular method of transportation in New York State and across the United States.

#### **Task:**

Using the information from the documents and your knowledge of social studies, write an essay in which you

- Write about the different reasons that railroads replaced canals as the most popular method of transportation

#### **In your essay remember to**

- Write about the different reasons that railroads replaced canals as the most popular method of transportation.
- Include an introduction, a body, and a conclusion.
- Use information from at least *four* documents in your answer. Each document is on a separate page.
- Include details, examples, or reasons in developing your ideas.

**FOR TEACHER USE ONLY**

**Total Part III B Score \_\_\_\_\_**

**Maximum Total is 4 Points**



Name: \_\_\_\_\_ School: \_\_\_\_\_

## PLANNING PAGE

You may plan your essay on this page, but do not write your final essay here. Your writing on this page will **not** count toward your final score. Write your final answer in the separate essay answer booklet.

**Begin writing the final version of your essay in the essay answer booklet.**

**FOR TEACHER USE ONLY**

Part I Score (Maximum of 35 Points)	
Part II Score (Maximum of 13 Points)	
Part III A Score (Maximum of 6 Points)	
Total Part I, II, and III A Score	
Part III B Essay Score (Maximum of 4 Points)	
<b>Final Score</b> (obtained from conversion chart) Scaled 0–100	