

THE UNIVERSITY OF THE STATE OF NEW YORK

GRADE 8

INTERMEDIATE-LEVEL TEST SOCIAL STUDIES

BOOKLET 1 OBJECTIVE AND CONSTRUCTED RESPONSE

JUNE 7, 2006

Student Name _____

School Name _____

Print your name and the name of your school on the lines above.

The test has three parts. Parts I and II are in this test booklet; Part III is in Booklet 2.

Part I contains 45 multiple-choice questions. Record your answers to these questions on the separate answer sheet. Use only a No. 2 pencil on your answer sheet.

Part II consists of several short-answer questions. Write your answers to Part II in this test booklet.

You will have $1\frac{1}{2}$ hours to answer **all** the questions in Booklet 1.

DO NOT TURN THIS PAGE UNTIL YOU ARE TOLD TO DO SO.

Part I

DIRECTIONS

There are 45 questions on Part I of the test. Each question is followed by four choices, numbered 1–4. Read each question carefully. Decide which word or expression, of those given, best completes the statement or answers the question. On the separate answer sheet, mark your answer in the row of circles for each question by filling in the circle that has the same number as the answer you have chosen. Use a pencil to mark the answer sheet.

Read the sample question below.

Sample Question

Which city is the capital of the United States?

- (1) Boston
- (2) Washington, D.C.
- (3) New York City
- (4) Philadelphia

The correct answer is **Washington, D.C.**, which is choice number **2**. On your answer sheet, look at the box showing the row of answer circles for the sample question. Since choice number **2** is the correct answer for the sample question, the circle with the number **2** has been filled in.

Answer all of the questions in Part I in the same way. Fill in only one circle for each question. Be sure to erase completely any answer you want to change. You may not know the answers to some of the questions, but do the best you can on each one.

When you have finished Part I, go right on to Part II.

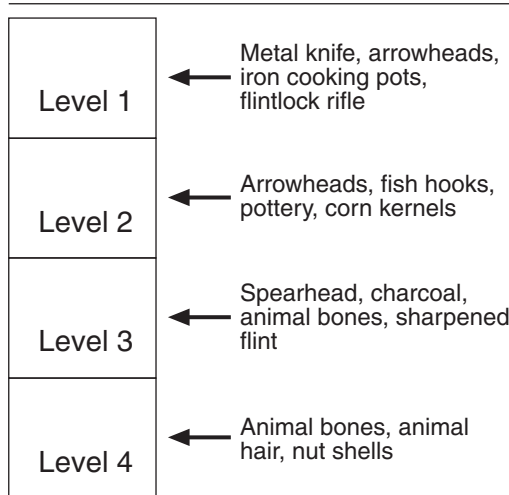
Part I

Answer all questions in this part.

- 1 Which phrase most accurately defines the term *culture*?
- (1) the artifacts left by ancient peoples
 - (2) the interaction of plants and animals within a natural environment
 - (3) a way of life shared by members of a society
 - (4) a firsthand account of an event

Base your answers to questions 2 and 3 on the diagram below and on your knowledge of social studies.

Levels of an Archaeological Dig in North America



- 2 At which level of the dig would an archaeologist expect to find the most recent objects?
- (1) Level 1
 - (2) Level 2
 - (3) Level 3
 - (4) Level 4
- 3 The people who left behind the objects found at Level 3 were most likely
- (1) successful farmers
 - (2) primitive hunters
 - (3) part of an industrial society
 - (4) dependent on trade

- 4 One way in which the Aztecs, Incas, and Mayas were similar is that they
- (1) traveled to the Western Hemisphere from Africa
 - (2) had developed advanced civilizations before the arrival of Columbus
 - (3) settled in the desert of the southwestern United States
 - (4) left no evidence to help us understand their cultures

- 5 What was the major reason the original settlers of Plymouth Colony, Maryland, and Pennsylvania came to America?

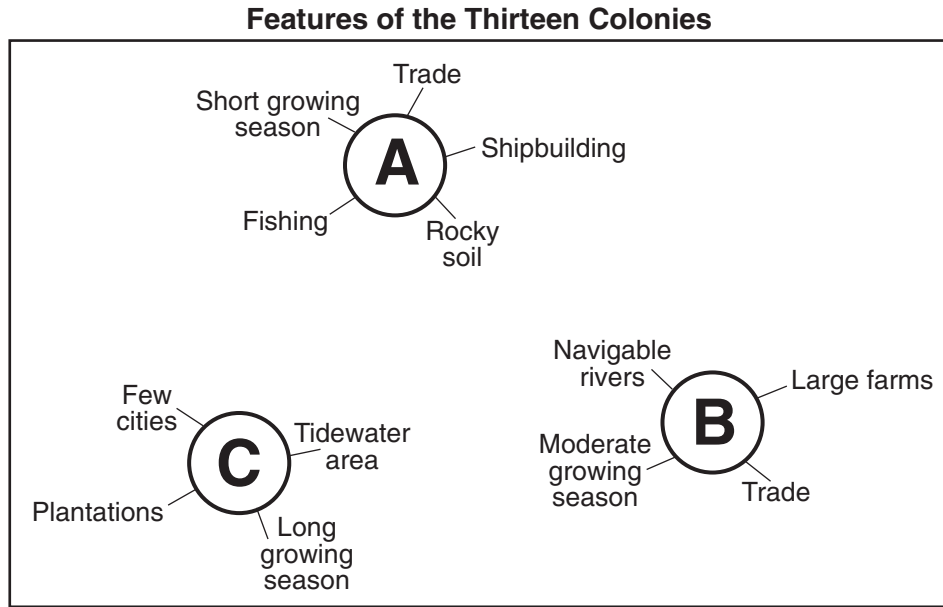
- (1) to secure freedom from religious persecution
- (2) to search for gold and silver
- (3) to convert Native American Indians to Christianity
- (4) to bring spices to the New World

- 6 Which heading best completes the partial outline below?

- | |
|-----------------------------------------------------------|
| I. _____ |
| A. Europeans establish colonies in North America. |
| B. Millions of Native American Indians die from diseases. |
| C. Enslaved Africans arrive in the Americas. |
| D. Foods from the Americas are introduced in Europe. |

- (1) Causes of English Colonization
- (2) Effects of the Exploration of the Americas
- (3) Cultural Contributions of Native American Indians
- (4) Discovery of the Northwest Passage

Base your answers to questions 7 through 9 on the diagram below and on your knowledge of social studies.



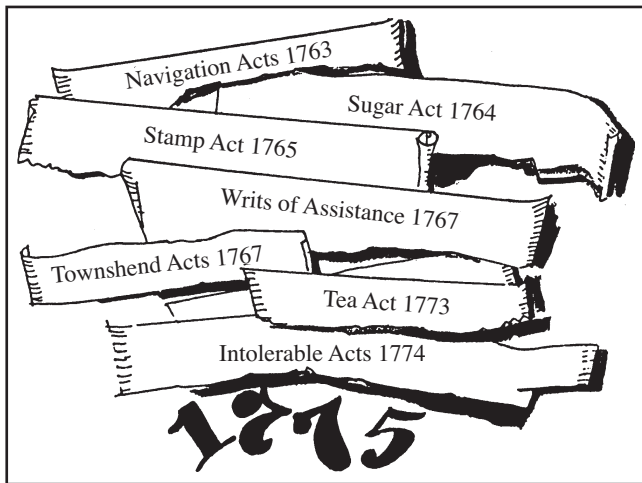
- 7 Which part of the thirteen colonies is represented by cluster A?
- (1) frontier region (3) middle colonies
 (2) New England colonies (4) southern colonies
- 8 What were the chief exports produced by colonists in cluster C?
- (1) whale oil and silver (3) textiles and tea
 (2) potatoes and fish (4) tobacco and rice
- 9 The differences between the three clusters shown in the diagram were mainly due to
- (1) geographic conditions (3) political beliefs
 (2) relations with England (4) religious practices

- 10 In the American colonies, boycotts were an effective way of protesting British policies mainly because the boycotts
- (1) ended trade within the colonies
 (2) forced Britain to remove most troops
 (3) kept out products from other European nations
 (4) caused economic hardships for British merchants

- 11 Which statement best illustrates the principle of federalism?
- (1) The president has the power to veto bills.
 (2) Congress is divided into two houses.
 (3) The Supreme Court has the power to review laws.
 (4) Power is divided between the states and the national government.

Base your answers to questions 12 and 13 on the illustration below and on your knowledge of social studies.

British Colonial Policies



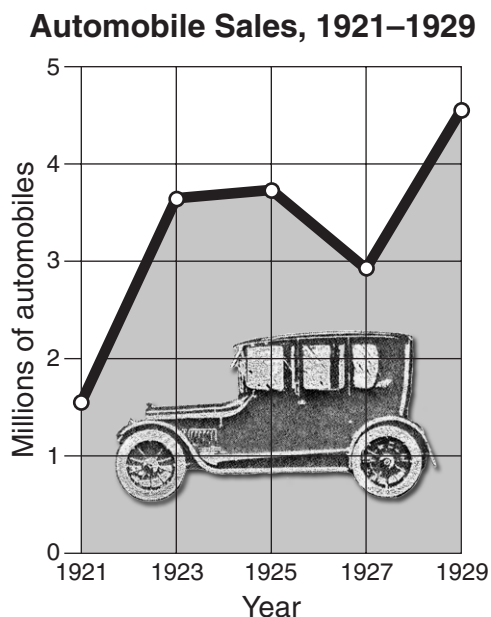
Source: Stephen Bronz et al., *Challenge of America*, Holt, Rinehart and Winston (adapted)

- 12 The main goal of most of the policies shown in the illustration was to
- (1) allow American colonists greater self-government
 - (2) enable Great Britain to raise revenues and control trade
 - (3) encourage immigration to the colonies
 - (4) encourage Americans to trade with other European countries
- 13 The policies shown in the illustration led to the
- (1) outbreak of the French and Indian War
 - (2) expansion of British trade with the thirteen colonies
 - (3) start of the American Revolution
 - (4) passage of the Northwest Ordinance
- 14 The system of checks and balances was included in the Constitution to
- (1) provide a method to change the document
 - (2) allow voters a voice in the legislative process
 - (3) ensure that one branch of government would not gain too much power
 - (4) allow for trial by jury in all civil and criminal cases
- 15 Which part of the federal government is most directly affected by the results of the federal census?
- (1) House of Representatives
 - (2) Supreme Court
 - (3) president's cabinet
 - (4) United States Senate
- 16 To win support for ratification of the United States Constitution, Federalists agreed to
- (1) give up western land claims
 - (2) restrict the importation of slaves
 - (3) add a bill of rights to the document
 - (4) grant voting rights to all adult white males
- 17 The Louisiana Purchase was important to the growth of the United States because it
- (1) doubled the size of the country
 - (2) gave the nation control of the Great Lakes
 - (3) completed America's westward expansion
 - (4) brought California into the Union
- 18 The Underground Railroad was developed in the 1840s in order to
- (1) smuggle illegal goods into the country
 - (2) help runaway slaves escape to freedom
 - (3) provide a form of inexpensive transportation
 - (4) stop illegal aliens from entering the country
- 19 The Seneca Falls Convention, held in 1848, is a significant event in United States history because it
- (1) supported the Missouri Compromise
 - (2) was the first national labor union meeting
 - (3) provided the United States with new western territory
 - (4) was an important step in the women's rights movement

- 20 During the 1840s, the idea of Manifest Destiny was used to
- (1) demand equal rights for African Americans
 - (2) support westward expansion to the Pacific
 - (3) criticize government treatment of Native American Indians
 - (4) extend slavery into New England
- 21 Which Civil War event occurred first?
- (1) battle of Gettysburg
 - (2) firing on Fort Sumter
 - (3) assassination of President Lincoln
 - (4) Emancipation Proclamation
- 22 Beginning in the late 1800s, poll taxes, literacy tests, and grandfather clauses were used to
- (1) protect important civil rights
 - (2) improve public education
 - (3) prevent African Americans from voting
 - (4) restrict immigration
- 23 The “separate but equal” principle established by the Supreme Court in *Plessy v. Ferguson* (1896) resulted in the
- (1) continuation of racial segregation
 - (2) forced integration of schools in the South
 - (3) loss of citizenship for African Americans
 - (4) elimination of Jim Crow laws
- 24 What was the most significant economic impact of the transcontinental railroads during the late 1800s?
- (1) eliminating overseas trade with Europe
 - (2) expanding interstate commerce nationwide
 - (3) decreasing the influence of big business
 - (4) rapid rebuilding of the South after the Civil War
- 25 In the late 1800s, rapid urbanization was mainly the result of the
- (1) shortage of land for new farms
 - (2) federally funded city redevelopment projects
 - (3) impact of industrialization
 - (4) migration of formerly enslaved persons to the West
- 26 A major goal of the Sherman Antitrust Act was to
- (1) prevent the formation of business monopolies
 - (2) limit imports from foreign nations
 - (3) set fair prices for manufactured goods
 - (4) protect consumers from dangerous products
- 27 During the Progressive Era (1900–1920), muckrakers were best known for
- (1) forming new political parties
 - (2) organizing protest rallies and marches
 - (3) serving in Congress and state legislatures
 - (4) exposing harmful practices of business and government
- 28 In 1899–1900, what was the goal of the United States when it began its Open Door policy toward China?
- (1) defending its new Asian territories
 - (2) protecting China from a Japanese invasion
 - (3) assuring equal trading rights for itself
 - (4) stopping importation of inexpensive goods from China
- 29 The United States was drawn into World War I mainly because of
- (1) exaggerated stories by yellow journalists
 - (2) the unrestricted use of submarine warfare
 - (3) a direct attack on an American military base
 - (4) commitments made to the United Nations

- 30 President Woodrow Wilson wanted to form the League of Nations to
- (1) prevent future wars
 - (2) create a world trade organization
 - (3) develop military plans to win World War I
 - (4) convince other nations to support the United States in World War I

Base your answers to questions 31 and 32 on the graph below and on your knowledge of social studies.



Source: Lorna Mason et al., *America's Past and Promise*, McDougal Littel, 1998 (adapted)

- 31 According to the graph, the greatest increase in automobile sales occurred between
- (1) 1921 and 1923
 - (2) 1923 and 1925
 - (3) 1925 and 1927
 - (4) 1927 and 1929
- 32 The information in the graph primarily reflects the influence of
- (1) the Great Depression
 - (2) increased foreign imports
 - (3) mass-production techniques
 - (4) public transportation systems

- 33 Which New Deal law established a system of unemployment insurance and pensions for retired workers?
- (1) Fair Labor Standards Act
 - (2) National Labor Relations Act
 - (3) National Recovery Act
 - (4) Social Security Act

- 34 In which area of the United States did the Dust Bowl of the 1930s occur?
- (1) Northeast
 - (2) Southeast
 - (3) Great Plains
 - (4) Pacific Northwest

Base your answer to question 35 on the poster below and on your knowledge of social studies.



Source: John Newton Hewitt, War Manpower Commission, 1944

- 35 This poster was used during World War II to
- (1) promote the sale of war bonds
 - (2) remind citizens to conserve during the war
 - (3) enlist women to serve in the armed forces
 - (4) encourage women to seek jobs in war-related industries

Base your answer to question 36 on the chart below and on your knowledge of social studies.

Selected United States Actions in Latin America (1904–1934)

Date	Location	United States Action
1904	Canal Zone	Beginning of United States control
1906–1909	Cuba	Military occupation to oversee voting reforms and elections
1912–1933	Nicaragua	Military occupation to keep order
1913	Honduras	Landing of marines to protect United States property
1914	Mexico	Occupation of Veracruz to stop importation of foreign arms
1915–1934	Haiti	Military occupation of country as United States protectorate

Source: Farran and Wattman, *New York and the Nation*, AMSCO (adapted)

36 Which term most accurately describes the United States actions shown in the chart?

- (1) isolationism
- (2) immigration
- (3) neutrality
- (4) intervention

37 During World War II, the federal government reacted to shortages of various goods by

- (1) raising prices to increase consumer demand
- (2) rationing certain products
- (3) increasing imports when shortages developed
- (4) imposing a national sales tax

38 The Cold War developed shortly after the end of World War II primarily because of the

- (1) results of the Nuremberg trials
- (2) Holocaust during World War II
- (3) disputes over Japanese control of China
- (4) conflicting goals of the United States and the Soviet Union

39 The Marshall Plan provided economic aid after World War II in order to

- (1) strengthen Western European nations against communism
- (2) assist soldiers returning to civilian life
- (3) help Japan rebuild damage caused by the atomic bombs
- (4) raise the standard of living in Asia and Africa

40 A major goal of the civil rights movement of the 1950s and 1960s was to

- (1) end racial segregation
- (2) reduce prejudice against immigrants
- (3) reform prison conditions
- (4) improve living conditions for Native American Indians

41 Harriet Tubman and Harriet Beecher Stowe were known for their support of

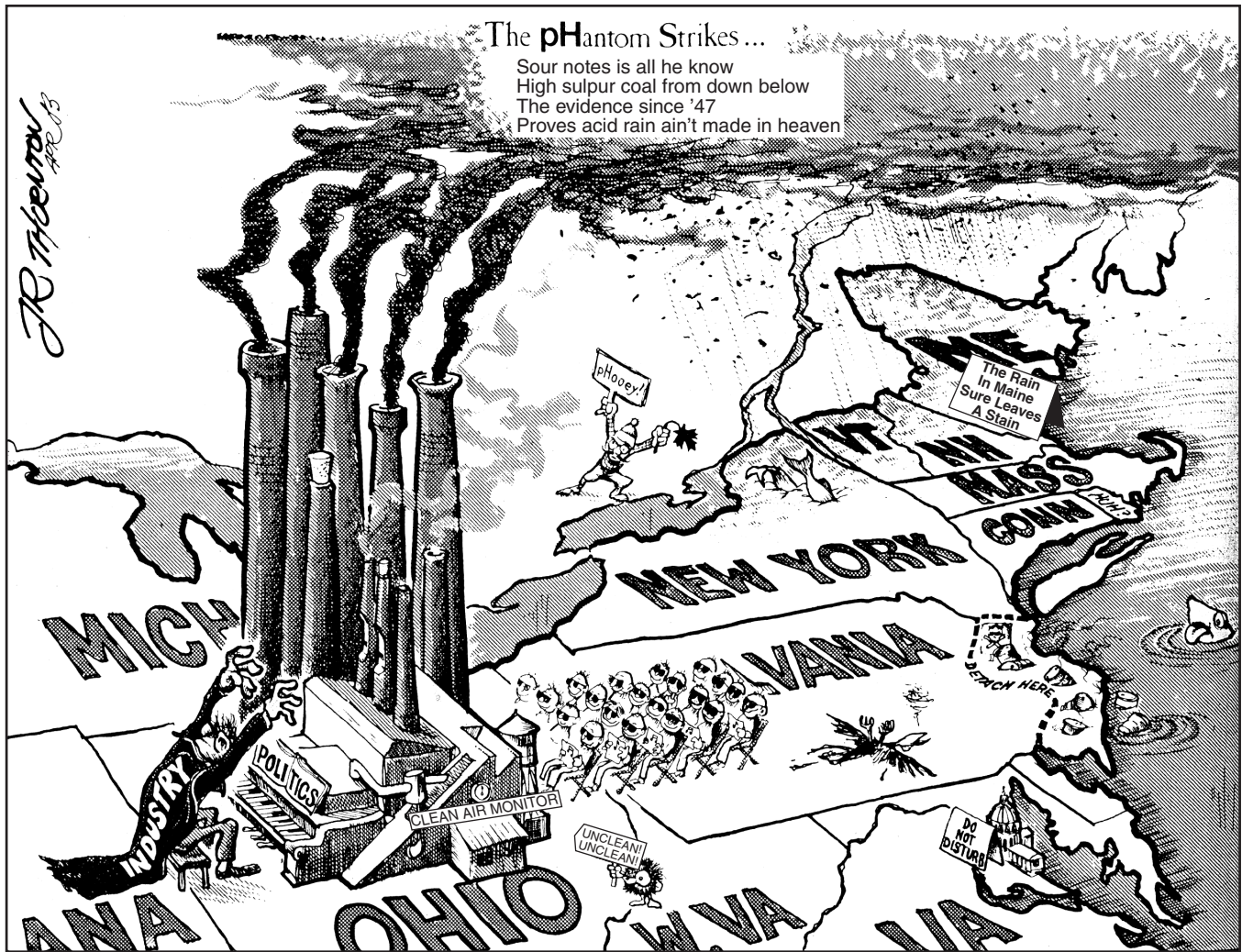
- (1) the Populist movement
- (2) the abolitionist movement
- (3) Jim Crow laws
- (4) fugitive slave laws

42 **“Tippecanoe and Tyler Too”**
“We Like Ike”
“All the Way with LBJ”

These slogans are all associated with

- (1) civil wars
- (2) westward expansion
- (3) civil rights movements
- (4) presidential elections

Base your answers to questions 43 and 44 on the cartoon below and on your knowledge of social studies.



Source: J.R. Thornton, *Republican Journal*, Belfast, Maine (adapted)

- 43 According to the cartoon, which factor is most responsible for the acid rain that falls on the Northeast?
- (1) global warming
(2) ocean pollution
(3) Midwest factories
(4) large East Coast cities
- 44 The cartoonist placed a “Do Not Disturb” sign on Washington, D. C., to make the point that
- (1) acid rain is an international problem
(2) air pollution is also a problem in the midwestern states
(3) northeastern states refuse to recognize the danger of air pollution
(4) the federal government has failed to deal adequately with the issue of acid rain

Base your answer to question 45 on the cartoon below and on your knowledge of social studies.



Source: Schwartz and O'Connor, *Exploring American History*, Globe Book (adapted)

- 45 According to this cartoon, the federal government is most likely
- (1) recognizing the need to increase spending for space programs
 - (2) determining a way to increase spending on health care
 - (3) weighing the cost of the space programs against domestic needs
 - (4) cutting foreign aid in order to balance the national budget
-

GO ON TO THE NEXT PAGE ⇨

FOR TEACHER USE ONLY

Part I Score _____

Part II

Directions: Write your answers to the questions that follow in the spaces provided in this test booklet.

Base your answers to questions 1 through 3 on the excerpt below and on your knowledge of social studies.

Selected Articles From the Articles of Confederation

Article I. “The Style of this Confederacy shall be ‘The United States of America.’”

Article II. “Each state retains its sovereignty, freedom and independence, and every power, jurisdiction, and right, which is not by this Confederation expressly delegated to the United States, in Congress assembled.”

Article III. “The said States hereby severally enter into a firm league of friendship with each other, for their common defense, the security of their liberties, and their mutual and general welfare, binding themselves to assist each other, against all force offered to, or attacks made upon them, or any of them, on account of religion, sovereignty, trade, or any other pretense whatever. . . .”

— Articles of Confederation (1781)

1 According to Article I, what form of government in the United States was established by these articles? [1]

Score

2 Identify **two** advantages states had under this form of government. [2]

(1) _____

(2) _____

Score

Score

3 State **two** reasons this form of government was replaced by the United States Constitution. [2]

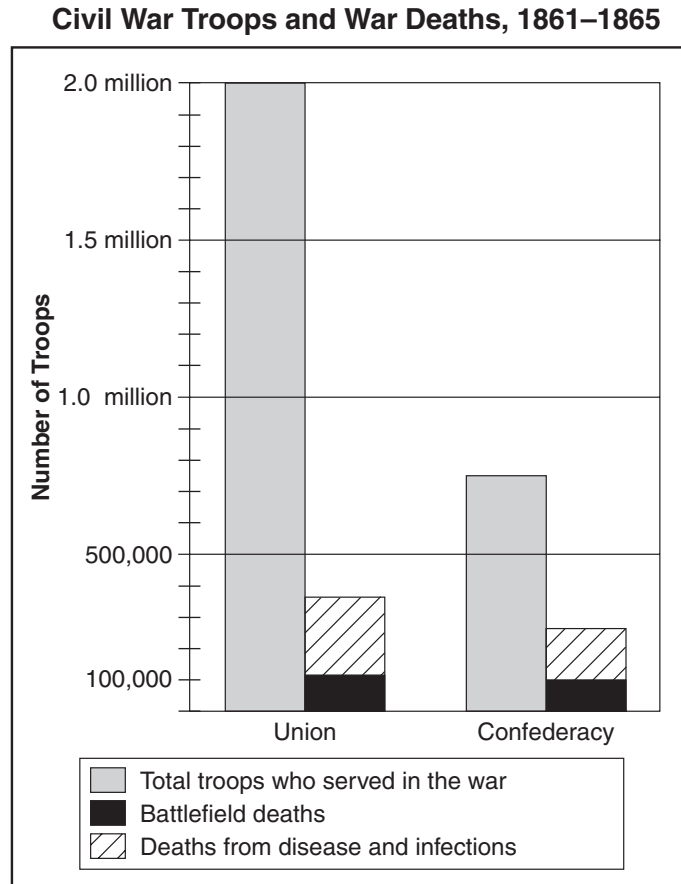
(1) _____

(2) _____

Score

Score

Base your answers to questions 4 through 6 on the graph below and on your knowledge of social studies.



Source: E. B. Long and Barbara Long, *The Civil War Day by Day: An Almanac, 1861–1865*, Doubleday (adapted)

4 Based on the information in this graph, state **one** advantage the Union had over the Confederacy during the Civil War. [1]

Score

5 Approximately how many Confederate troops died during the Civil War? [1]

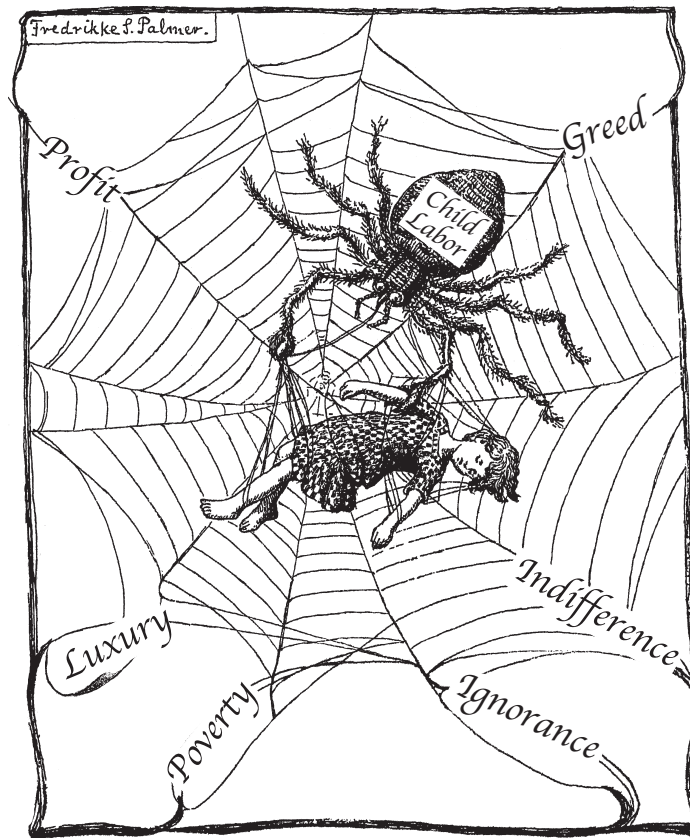
Score

6 State **one** reason deaths from disease and infections were greater than battlefield deaths during the Civil War. [1]

Score

Base your answers to questions 7 through 9 on the cartoon below and on your knowledge of social studies.

Child Labor



What are you going to do about it?

Source: Fredrikke Palmer, *Women's Journal and Suffrage News*, 1916 (adapted)

7 What is the primary issue addressed in this cartoon? [1]

Score

8 Based on the cartoon, identify **two** factors that were responsible for the issue addressed in the cartoon. [2]

(1) _____

Score

(2) _____

Score

9 Identify **one** group of people who helped cause the situation shown in the cartoon. [1]

Score

Base your answers to questions 10 through 12 on the letter below and on your knowledge of social studies.

September 6, 1945

Dear President Truman:

This letter is in reference to the unemployment situation on Long Island, New York. Now that the war is won and over, there are no jobs with a living wage available.

I was one of the first women to be employed by the Grumman Aircraft Engineering Corp. back in March of 1942; now I am given to understand that the Grumman Corp. will not rehire any women in their shop.

The only jobs open to women are office jobs which pay an average wage of \$20.00 to \$22.00 a week. I happen to be a widow with a mother and son to support and no other means of income. I pay \$45.00 a month for rent exclusive of my gas and light and at the present time there is no cheaper place to rent on Long Island.

This being the conditions, I am unable to manage on a \$22.00 a week salary.

My reason for writing to you is not for pity, but I would like to know why, after serving a company in good faith for almost 3 1/2 years, is it now impossible to obtain employment with them. I am a lathe hand and was classified as skilled labor, but simply because I happen to be a woman I am not wanted.

Won't you kindly look into these matters and see that the women who are considered the head of a family get as much of an even break as the men.

Sincerely yours,
Otilie Juliet Gattuso
30 Shepherd Avenue
Lynbrook, New York

Source: National Archives

10 Which situation concerning women is the author of this letter protesting? [1]

Score

11 State **two** arguments the author of this letter gives to support her request. [2]

(1) _____

Score

(2) _____

Score

12 State **one** likely reason the Grumman Corporation would have used to justify its actions. [1]

Score

FOR TEACHER USE ONLY

Part II Score _____